

E3 Series

ELECTRIC SCISSOR LIFTS



1532E3
1932E3
2033E3
2046E3
2646E3
2658E3

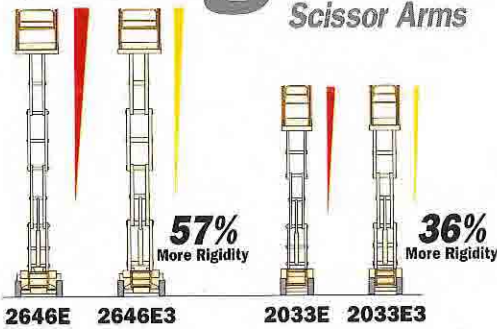


JLG

The Best Just Got Better

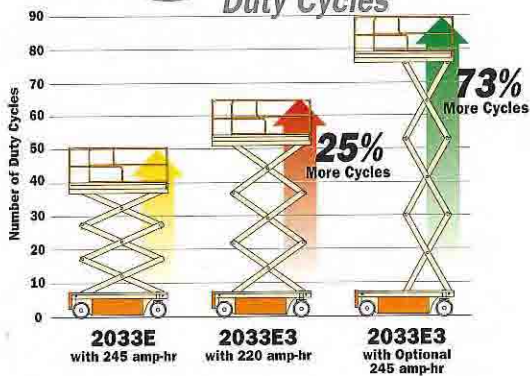
Stronger

Scissor Arms



Longer

Duty Cycles

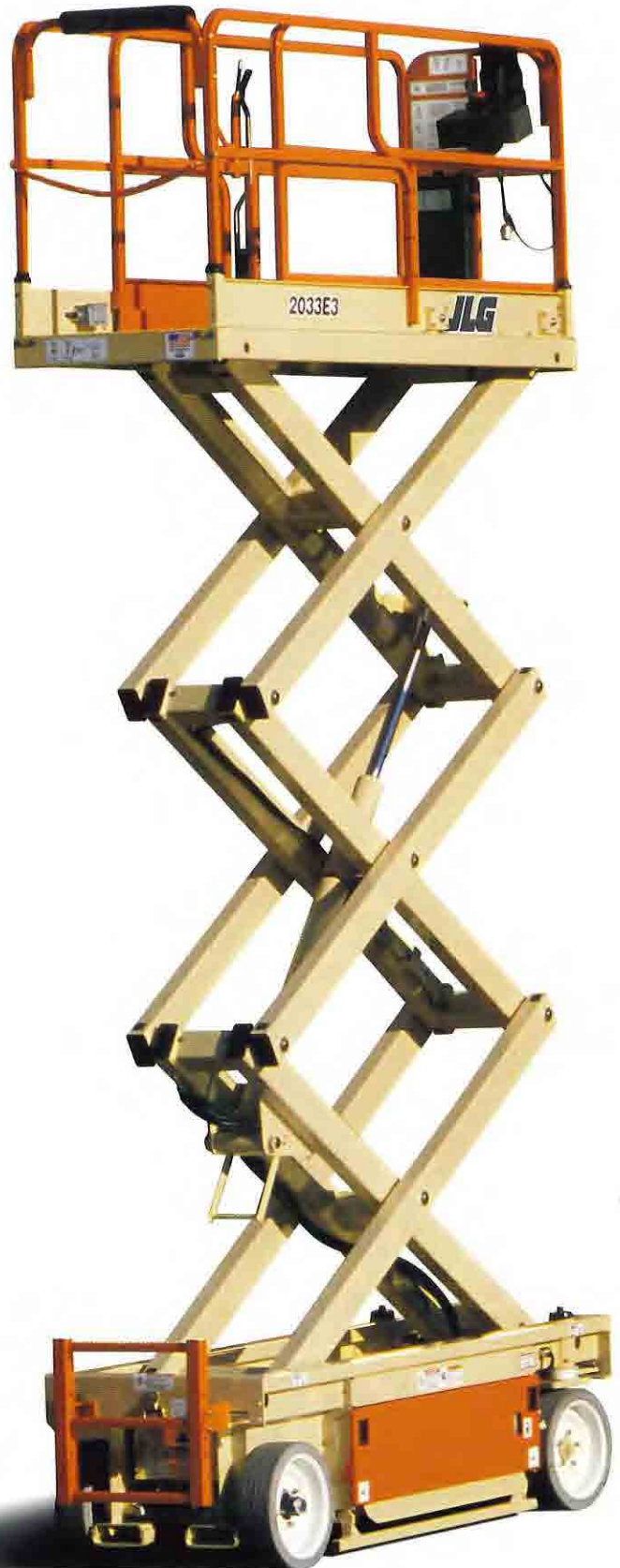


Smarter

Control Systems



-  **More Rugged**
-  **Smother Operation**
-  **Improved Diagnostics**



Discover The Ultimate In Small Scissor Lifts

JLG reaches a new level of productivity with a new family of electric scissor lifts. The E3 Series combines all the advantages of our original E Series with the latest product innovations to provide top-of-the-line performance for both indoor and outdoor slab use.

The E3 Series features a new and improved control system to provide smoother operation and more rigid scissor arms for a more solid feeling while on the platform. And, with the addition of a more efficient hydraulic system, the E3 Series provides longer duty cycles to stay on the job and get more work done.





Fold-Down Handrails Speed Access Through Entrances and Exits

With a simplified design and two-step folding process, the new fold-down railing system offers ease of transport, reduced set-up time and provides improved accessibility through doorways and entrances and exits.

Innovative Platform Controls

Platform controls feature high-contrast colours and oversized graphic symbols. A durable membrane switch panel eliminates toggle switches. A single control lever provides full proportional control of drive and lift functions.



Improved SMART System™ Controls

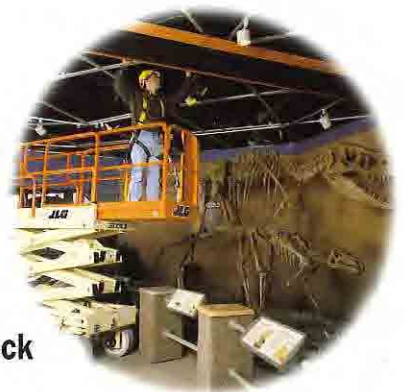


A more rugged control system offers greater reliability with smoother operation. Plus, troubleshooting is made easier through self-diagnostic testing.



Rugged Platform Features Standard Roll-Out Deck Extension

Platform and extension decks feature rugged diamond tread steel plate flooring. Hand railing is constructed of durable square steel tubing. The extension deck rolls out smoothly on large diameter polyethylene rollers and is locked in place with corrosion resistant pins.



More Rigid Scissor Arms

With the large cross members and large tubes on a new wide stance arm stack, the E3 Series provides increased rigidity for greater confidence on the job. Improved pin and bushing tolerances provide more rigid support. The new arm stack also provides exceptional wear characteristics, higher corrosion resistance and an extended service life.



Exceptional Steering Performance

Front wheel drive and front wheel steering permit high steering angles and tight turning circles for superior manoeuvrability. A thumb actuated rocker switch on the single axis control lever conveniently controls steering.



Longer Duty Cycles

Now you can stay on the job longer. The combination of our redesigned hydraulic system and the new and improved Smart System™ controls delivers more than enough cycle times for a typical work shift.

Specifications	1532E3	1932E3	2033E3	2046E3	2646E3	2658E3
A. Platform Height - Elevated	4.57 m (15 ft.)	5.79 m (19 ft.)	6.10 m (20 ft.)	6.10 m (20 ft.)	7.92 m (26 ft.)	7.92 m (26 ft.)
B. Platform Height - Lowered	0.92 m (36.5 in.)	1.02 m (40 in.)	1.00 m (39.5 in.)	1.00 m (39.5 in.)	1.13 m (44.5 in.)	1.13 m (44.5 in.)
C. Platform Railing Height	1.1 m (43.5 in.)	1.1 m (43.5 in.)	1.1 m (43.5 in.)	1.1 m (43.5 in.)	1.1 m (43.5 in.)	1.1 m (43.5 in.)
D. Stowed Height (rails folded)	1.83 m (72 in.)	1.93 m (76 in.)	1.66 m (65.5 in.)	1.66 m (65.5 in.)	1.9 m (75 in.)	1.9 m (75 in.)
E. Platform Size	0.76 m x 1.63 m (30 in. x 64 in.)	0.76 m x 1.63 m (30 in. x 64 in.)	0.76 m x 2.39 m (30 in. x 94 in.)	1.07 m x 2.39 m (42 in. x 94 in.)	1.07 m x 2.39 m (42 in. x 94 in.)	1.37 m x 2.39 m (54 in. x 94 in.)
F. Deck Extension	0.91 m (36 in.)	0.91 m (36 in.)	0.91 m (36 in.)	0.91 m (36 in.)	0.91 m (36 in.)	0.91 m (36 in.)
G. Overall Width	0.83 m (32.5 in.)	0.83 m (32.5 in.)	0.84 m (33 in.)	1.17 m (46 in.)	1.17 m (46 in.)	1.47 m (58 in.)
H. Overall Length ¹	1.81 m (71.5 in.)	1.81 m (71.5 in.)	2.54 m (100 in.)	2.54 m (100 in.)	2.54 m (100 in.)	2.54 m (100 in.)
I. Wheelbase	1.27 m (50 in.)	1.27 m (50 in.)	1.85 m (73 in.)	1.85 m (73 in.)	1.85 m (73 in.)	1.85 m (73 in.)
J. Ground Clearance	76 mm (3 in.)	76 mm (3 in.)	89 mm (3.5 in.)	89 mm (3.5 in.)	89 mm (3.5 in.)	89 mm (3.5 in.)
Platform Capacity ²	270 kg (595 lbs)	230 kg (500 lbs)	340 kg (750 lbs)	455 kg (1,000 lbs.)	340 kg (750 lbs.)	455 kg (1,000 lbs.)
Capacity on Deck Extension	120 kg (265 lbs.)	120 kg (265 lbs.)	120 kg (265 lbs.)	120 kg (265 lbs.)	120 kg (265 lbs.)	120 kg (265 lbs.)
Lift/Lower Time	20/26 sec.	22/28 sec.	34/28 sec.	36/28 sec.	54/38 sec.	56/39 sec.
Maximum Drive Height ³	3.96 m (13 ft.)	4.27 m (14 ft.)	Full Height	Full Height	Full Height	Full Height
Gross Vehicle Weight ⁴	1,315 kg (2,900 lbs.)	1,385 kg (3,050 lbs.)	2,035 kg (4,485 lbs.)	1,880 kg (4,145 lbs.)	2,075 kg (4,575 lbs.)	2,240 kg (4,935 lbs.)
Drive Speed - Lowered	4 kph (2.5 mph)	4 kph (2.5 mph)	4.4 kph (2.75 mph)	3.6 kph (2.25 mph)	3.6 kph (2.25 mph)	3.6 kph (2.25 mph)
Drive Speed - Elevated	0.8 kph (0.5 mph)	0.8 kph (0.5 mph)	0.8 kph (0.5 mph)	0.8 kph (0.5 mph)	0.8 kph (0.5 mph)	0.8 kph (0.5 mph)
Gradeability	25%	25%	25%	25%	25%	25%
Turning Radius - Inside	0.05 m (2 in.)	0.05 m (2 in.)	0.05 m (2 in.)	0.41 m (16 in.)	0.41 m (16 in.)	0.41 m (16 in.)
Turning Radius - Outside	1.67 m (66 in.)	1.67 m (66 in.)	2.03 m (80 in.)	2.41 m (95 in.)	2.41 m (95 in.)	2.54 m (100 in.)
Tyre Size/Type	14 x 4.5 Non-Marking Solid	14 x 4.5 Non-Marking Solid	16 x 5 Non-Marking Solid	16 x 5 Non-Marking Solid	16 x 5 Non-Marking Solid	16 x 5 Non-Marking Solid
Brakes	Automatic Rear Wheel Parking	Automatic Rear Wheel Parking	Automatic Rear Wheel Parking	Automatic Rear Wheel Parking	Automatic Rear Wheel Parking	Automatic Rear Wheel Parking
Batteries	4 x 6V, 220 amp hr	4 x 6V, 220 amp hr	4 x 6V, 220 amp hr	4 x 6V, 220 amp hr	4 x 6V, 220 amp hr	4 x 6V, 220 amp hr
Charger	Automatic 24V DC	Automatic 24V DC	Automatic 24V DC	Automatic 24V DC	Automatic 24V DC	Automatic 24V DC
Electric Motor	3.4 kW (4.5 hp)	3.4 kW (4.5 hp)	3.4 kW (4.5 hp)	3.4 kW (4.5 hp)	3.4 kW (4.5 hp)	3.4 kW (4.5 hp)
Pump, single section	15.1 LPM (4 GPM)	15.1 LPM (4 GPM)	15.1 LPM (4 GPM)	15.1 LPM (4 GPM)	15.1 LPM (4 GPM)	15.1 LPM (4 GPM)
Hydraulic Reservoir	14 L (3.7 gal.)	14 L (3.7 gal.)	15.2 L (4 gal.)	15.2 L (4 gal.)	15.2 L (4 gal.)	15.2 L (4 gal.)

¹ Length includes ladder.

² 1532/1932 one person indoor, 2033/2646 one person outdoor; 2046/2658 two person outdoor.

³ Drive height for units with CE spec.

⁴ Gross Vehicle Weight includes outdoor rating where applicable.

Specifications may change to meet country standards or with the addition of optional equipment

