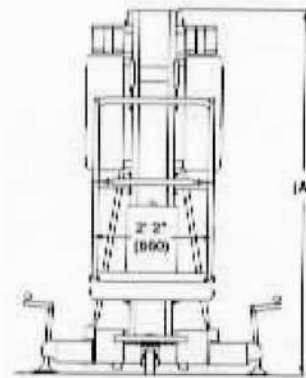
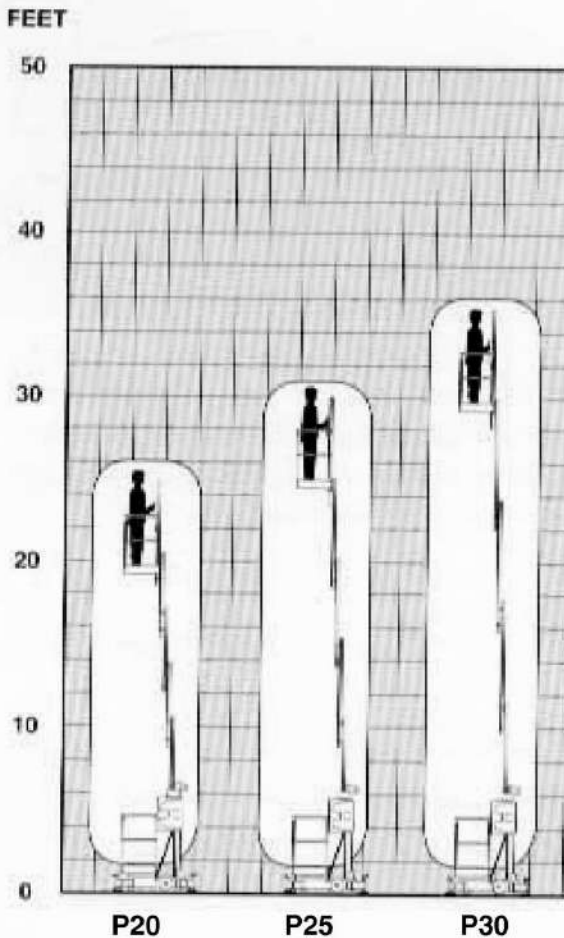


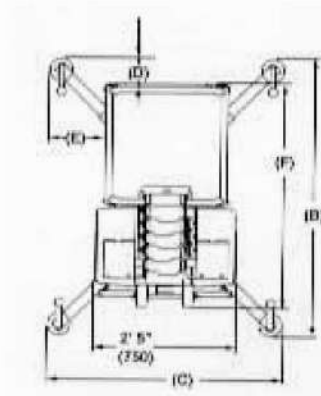
P20 - P25 - P30 Specifications

Dimensions

Model	P20	P25	P30
Working Height	26 ft. (8 m)	31 ft. (9.5 m)	36 ft. (10.9 m)
Platform Height	20 ft. (6.0 m)	25 ft. (7.6 m)	30 ft. (9.1 m)
Platform Size	26 in. x 26 in. (0.6 x 0.6 m)	26 in. x 26 in. (0.6 x 0.6 m)	26 in. x 26 in. (0.6 x 0.6 m)
Platform Capacity	350 lb. (159 kg)	350 lb. (159 kg)	350 lb. (159 kg)
Overall Machine Length (F)	4 ft. 1 in. (1.2 m)	4 ft. 1 in. (1.2 m)	4 ft. 4 in. (1.3 m)
Overall Machine Width	2 ft. 5 in. (0.7 m)	2 ft. 5 in. (0.7 m)	2 ft. 5 in. (0.7 m)
Overall Machine Height (A)	6 ft. 6 in. (1.9 m)	6 ft. 6 in. (1.9 m)	6 ft. 6 in. (1.9 m)
Overall Machine Weight	794 lb. (360 kg)	836 lb. (380 kg)	926 lb. (420 kg)
Outrigger footprint (L x W [B&C])	55 x 45 in. (1.4 x 1.1 m)	60 x 50 in. (1.5 x 1.3 m)	68 x 58 in. (1.7 x 1.5 m)
Wall Access:			
Front (D)	4 in. (0.10 m)	6 in. (0.15 m)	7 in. (0.18 m)
Side (E)	10 in. (0.25 m)	12 in. (0.30 m)	16 in. (0.41 m)
Power	DC	DC	DC
Battery	12 VDC 95 amp	12 VDC 95 amp	12 VDC 95 amp
Charger	15 amp automatic	15 amp automatic	15 amp automatic



Front View



Top View

2.2.5. P35AC/DC

Dimensiones en milímetros

